

FEED MIXER WAGONS

# HORIZONTAL TRAILED MIXERS

PRODUCTS RANGE

**STURTI**  
Excellence since 1956





# IN LOVE WITH FEEDING

**Since 1956** we have been producing machines  
and SOLUTIONS for ANIMAL FEED AND HEALTH



We envisage a world where economic and environmental sustainability, traceability and animal health may be the leading values to win future feeding challenges.

We have been satisfying our customers' needs with new high end and innovative products and services for more than 65 years.

Innovation, passion, as well as our great team spirit have driven us to become one of the world's leading references in agricultural mechanization.



# STORTI PRODUCT RANGE

## SELF-PROPELLED



### VERTICAL

dobermann<sup>EVO</sup>  
SV

dobermann<sup>EVO</sup>  
SW

dobermann<sup>EVO</sup>  
SW GP

terrier<sup>EVO</sup>  
SW

## TRAILED



### HORIZONTAL

husky  
MT

husky  
DS

boxer  
MT

boxer  
DS

## STATIONARY



### HORIZONTAL

husky  
ST

## STATIONARY



### VERTICAL

dunker  
ST

terrier\*  
SW

## SELF-PROPELLED



pointerEVO

pointer\*

greyhound\*

## HORIZONTAL

dogo  
MT

## TRAILED

dunker  
T1dunker  
T2dunker  
T3

## VERTICAL

\* AVAILABLE ONLY IN SPECIFIC MARKETS

SERVING  
THE BARN

sweeper



SB30



motobrush

# STORTI HORIZONTAL MIXER WAGONS

TRAILED AND STATIONARY MIXERS



IN LOVE  
WITH<sup>®</sup> FEEDING

# PLUS

*Discover our advantages*

LOADING <

MIXING AND TMR <

OPTIONS <

UNLOADING <

COMPACT FEEDING <



**STURTI**



## LOADING

The rear silage loader, available for all DS horizontal mixers in 3 widths (1400, 1650, 1800 mm), preserves the perfect feed fibre and structure in all types of bunkers: corn silage, grass silage, hay, straw and other types of feed.

The rear silage loader is activated by a powerful hydraulic motor that, thanks to its rotor design, does not mishandle silage structure and feed, while maintaining high loading performances and accurate quantities. Specific options are available for intensive use of the silage loader by

Multiple solutions for a fast precise and performing mix.

selecting a cast iron body pump and a dedicated cooling system.

Storti is careful to comply with the most stringent safety rules. Therefore, we have equipped our silage loaders with an electro-hydraulic clutch which, operated by or Dinacom 2 electric control, stops the mixing and loading process as soon as the operator moves to an unsafe position.



IN LOVE  
WITH FEEDING®

The silage loader is safely attached to the mixer wagon during transport thanks to a specific hooking mechanism which avoids

any stress or damage when travelling on uneven terrains.



Our MT horizontal mixers can easily be filled by using a common telescopic loader or tractor loader arms either from the side or from the rear by means of a dedicated hopper.

**STURTI**

## MIXING AND TMR

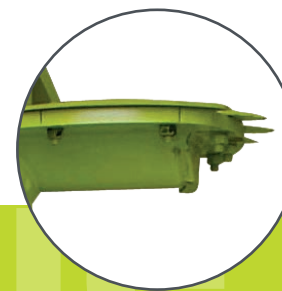
Storti horizontal mixers: multiple technologies to reach the best solutions.

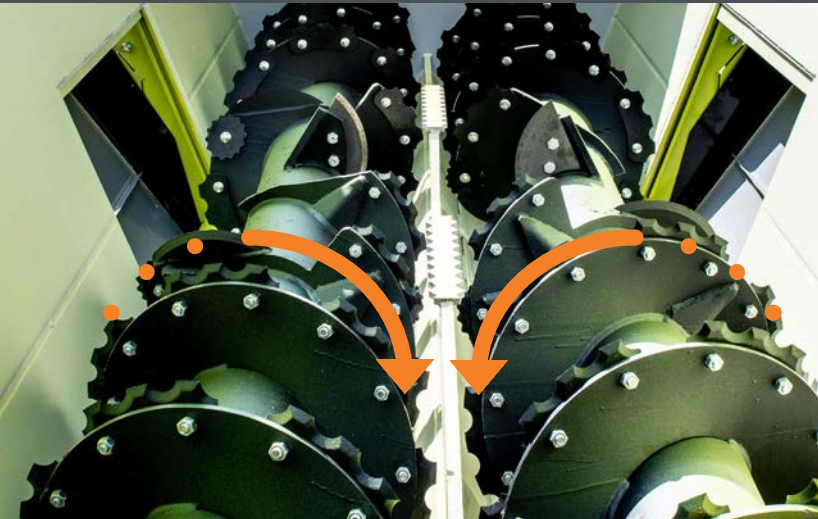
Horizontal mixing system main advantages:

- A quick and precise fibre cut thanks to the reduced distance between knives and breaker bars which improves animal rumination.
- Possibility of preparing specific rations for smaller groups of animals by maintaining the same mixing quality.
- Superior mixing quality as our multi-flow system is less affected by the specific weight of each component.
- 90% dust reduction coming from the mixing process also when processing dry feeds.
- Adjustable cutting performances by modifying the distance between knives and breaker bars.

Only genuine spare parts guarantee a lasting trim and mixing performance.

IN LOVE  
WITH FEEDING®

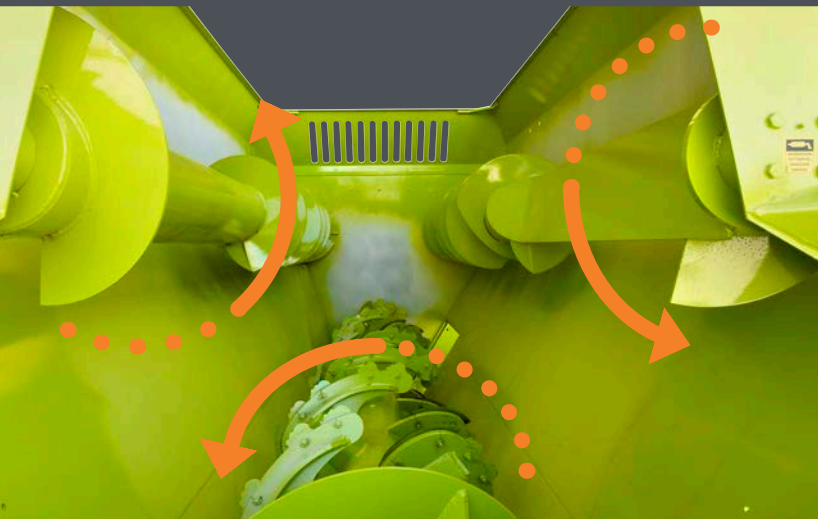




### **Boxer: 2 counter-opposed mixing augers.**

Our 2-auger counter-opposed “volcanic” mixing technology enables long fibre quick cut also when processing complete bales, resulting in an extremely soft final mix. As a matter of fact, the complete distribution of knives along the augers provides excellent cutting performances which have become a benchmark in our industry.

Power requirements remain low even when processing long fibres and heavy loads.



### **Husky: Multi-flow 3-auger mixing technology.**

Our extended experience worldwide using different types of feed helped us optimize our Multi-flow mixing technology. The bottom paddle auger with multiple angles of attack provides maximum TMR homogeneity and an efficient fibre cut to improve ingestion and rumination.

Our 3-auger technology maximizes the efficient use of the mixer volume. The main mixing auger moves the feed from rear to front where the top augers move the ingredients back towards the rear where the flow starts again.

## PLUS

### OPTIONS

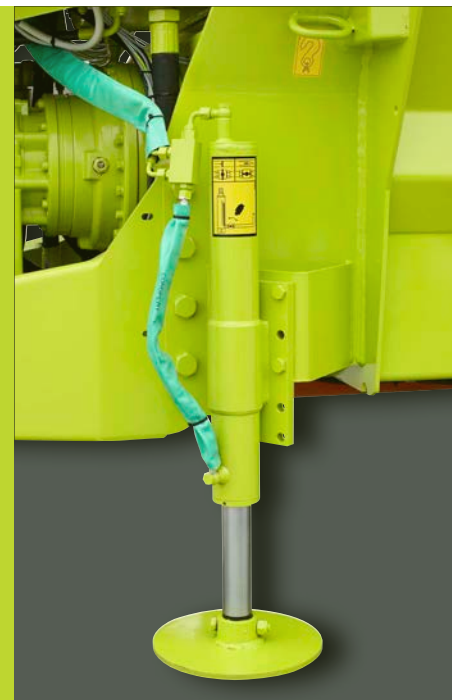
The correct solution for all needs.

To comply with customers' growing needs, our list of options has increased in range and depth.

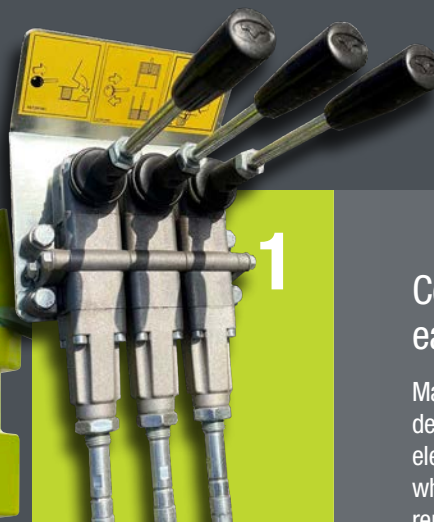
Improving has always been Storti's DNA and our technical solutions have enhanced the TMR mixing experience.

Some of the most requested and appreciated options are:

- Stainless steel bottom to increase the working life of the mixer
- Lower wheels to reduce the overall mixer height
- Multiple lengths unloading belts
- Braking systems and roadworthy certifications
- Weighing systems and precision feeding software
- Larger wheels for a lower ground pressure when working on muddy terrains
- Silage loaders with aggressive knives patterns when working with highly compacted feed



IN LOVE  
WITH FEEDING



1

## Comfortable access and easy maintenance.

Maintenance is made easy by a correct design of the access to all mechanical, electric and hydraulic components, which are centralized and protected by removable bonnets



2

Mixing augers greasing and adjusting is simple and accessible.

## Controls and functions.

1. Flexible cable controls are standard for our MT models, while option for DS models in non-EU countries.

2. Dinacom 2 electronic controls are standard for DS models and an integral component of our silage loading safety system, while option on all MT models.



3

3. The DTO control is an option for MT and DS models (only in non-EU countries).



## UNLOADING

Maximum tank cleanliness  
with even unload.

When you are looking for a precise, even unloading and a complete tank cleanliness, horizontal feed mixers are the best solution.

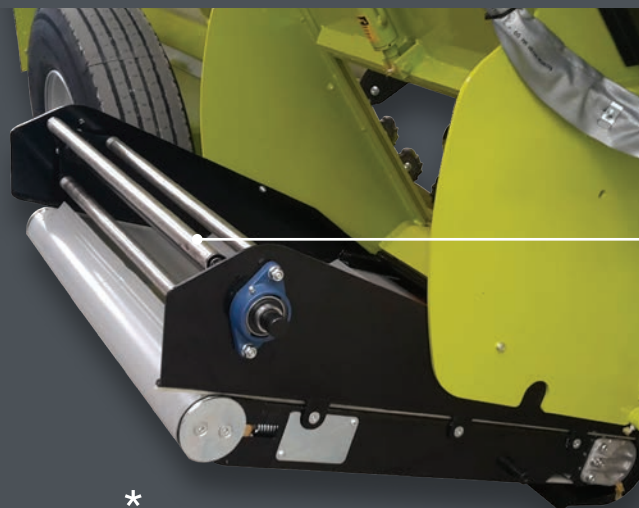
Horizontal feed mixing is appreciated when you need an accurate unloading and in particular for smaller groups of animals (i.e. beef cattle boxes) as the

feed flow is easily controlled by the operator.

PVC unloading belts enable a scalable feed distribution, while maintaining a very low noise level also at high speed. It is possible to unload feed at a distance with a mechanism that is safe for the animals as well as for the operator.



Wide unloading doors

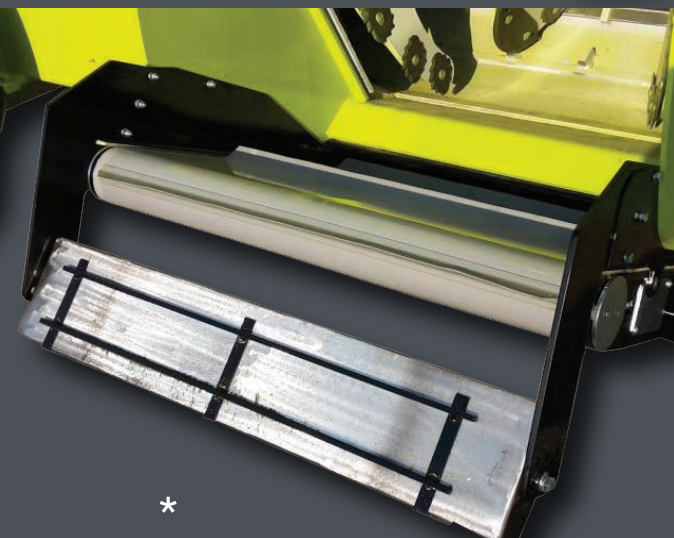


The rotation magnet is available for our complete range of mixers. Coupled to PVC unloading belts, it enables an efficient search and removal of metal scraps in your TMR, such as nuts, bolts and steel wire.

The rotation movement of the magnetic paddle improves TMR fluffiness and palatability.



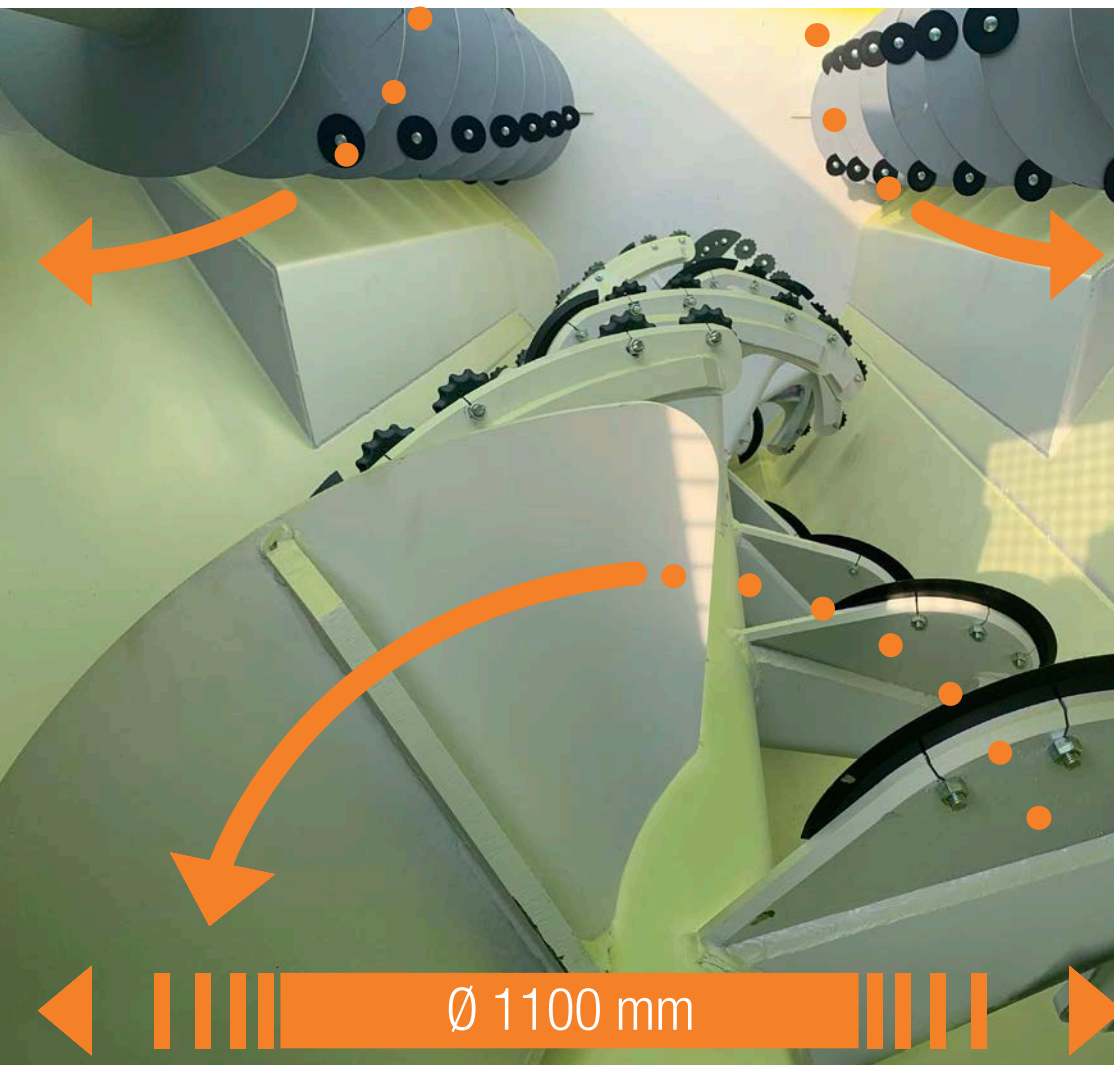
Our fix magnets are a simple and economical solution that maintain the unloading flow and act as a magnetic chute where metal scraps are trapped.



Having metal scrap in your TMR?  
Our magnets will do the job.

\* To obtain better photographic material for this catalogue, some of the safety protections have been temporarily removed. We remind you that for your safety, such protections must not be removed or tampered with.

**STURTI**



## COMPACT FEEDING

A new trend which is already a must in various countries.

Compact Feeding is a relatively new concept. It was developed in Denmark around 10 years ago. It consists in adding water to concentrates and let this pre-mix mature for hours or

even for the whole night. Silage feed is then added to obtain an extremely compact and heavy mix, so animals are compelled to eat the complete TMR avoiding any selection. This guarantees that the entire herd will be fed with the same TMR ration.

Comparative and independent tests in Denmark have proved that the most suitable type of mixing technology for this type of mixes is the 3-auger horizontal system, as it provides homogeneity and tank cleanliness when unloading. Our DOGO 3-auger range of horizontal mixer has been developed with Compact Feeding in mind.



Upper counter-rotating augers with knives, 1100 mm diameter main cutting-mixing bottom auger with Piranha adjustable knives.

**Dogo:** the horizontal range  
for larger farms.

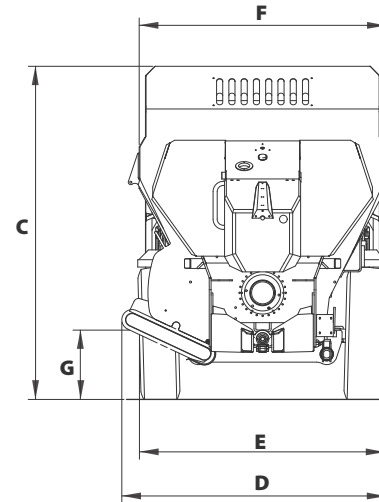
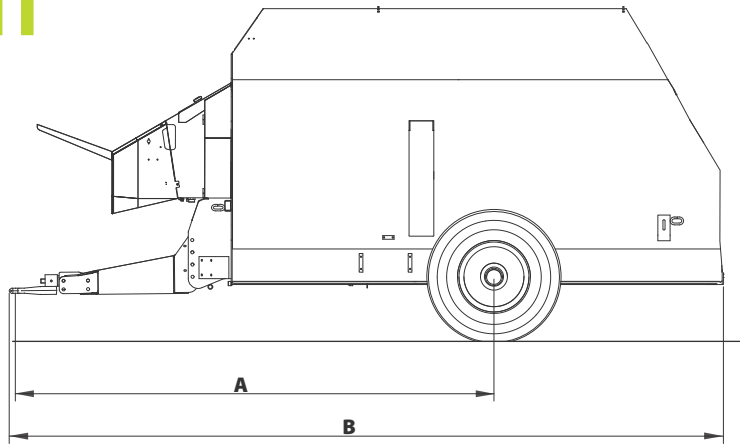
The DOGO range has been also developed to satisfy the demand of high-capacity horizontal mixers for intensive and continuous applications.

Dogo is aimed at larger farms that appreciate the quality of horizontal mixing technology while using high loading capacities.



**STURTI**

# HUSKY MT



## TECHNICAL DATA SHEET

		A	B	C	D	E	F	G	H	I	J	Power required	Empty weight	Loaded weight
	m <sup>3</sup>	mm	mm	mm	mm	mm	mm	mm	mm	mm	mm	kW-HP	kg	kg
<b>MT 50</b>	5	3.250	4.445	2.100	1.780	1.710	1.665	415				34-45	2.550*	4.700
<b>MT 70</b>	7	3.315	4.915	2.285	1.825	1.760	1.750	410				35-47	3.050*	6.700
<b>MT 90</b>	9	3.660	5.270	2.545	2.080	1.990	1.865	535				40-54	3.950*	8.350
<b>MT 120</b>	12	3.910	5.905	2.715	2.155	1.990	2.015	565				46-61	4.600*	9.900
<b>MT 160</b>	16	4.200	6.655	2.815	2.220	2.200	2.140	555				53-71	5.700*	11.900
<b>MT 190</b>	19	4.350	6.900	2.950	2.270	2.275	2.265	580				57-76	6.150*	13.000

\*Data are indicative and may change according to the configurations.

## Husky MT: Just mixing

The Husky MT range is our 3-auger essential and compact feed mixer from 5 to 19 m<sup>3</sup> capacity.

The excellent central positioning of the axle enables a reduced wheel track improving the manoeuvrability in tight areas and a perfect distribution of the masses. The front PVC unloading belt offers unmatched visibility to the operator and large 800 mm wide door for 5 and 7 m<sup>3</sup> and 900 mm for the bigger models.

The MT models allow the operator to access the mixer by means of a rear safety grill to check TMR quality and add concentrates and flours.

Storti's standard weighing system is equipped with 3 cylindrical dynamic load cells which provide maximum stability and accuracy of weight.

A sturdy and reliable transmission is provided by an epicycoid gearbox directly connected to the cutting-mixing auger with a dust reducing ring. The top augers are activated by an externally lubricated chain transmission.

# HUSKY MT

50  
70  
90  
120  
160  
190

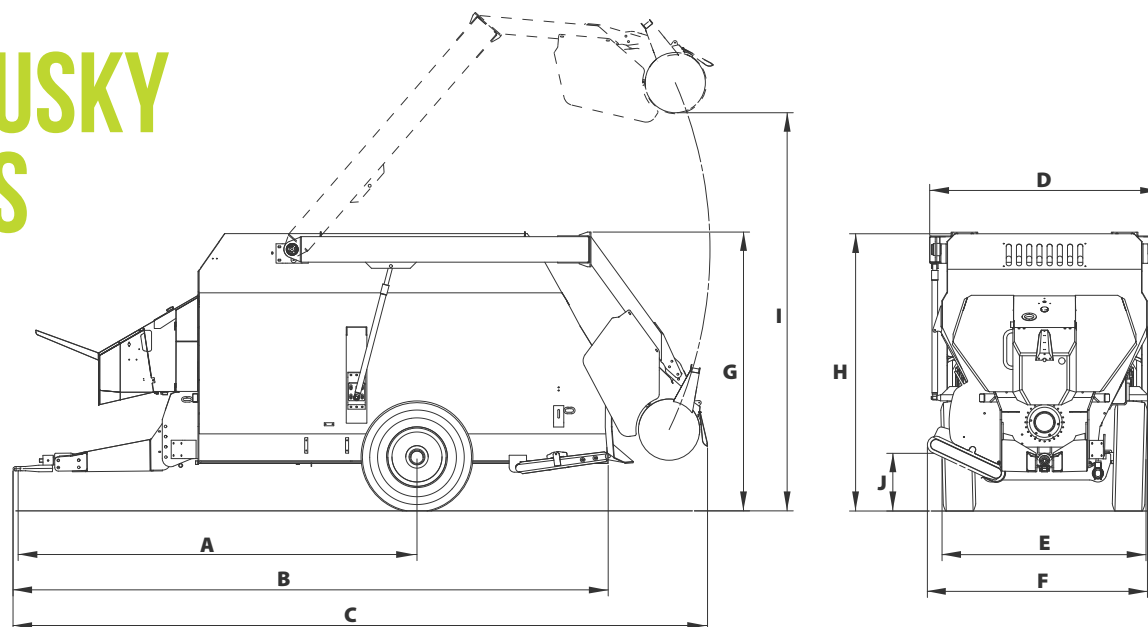


**STORTI** E

B

D

# HUSKY DS



## TECHNICAL DATA SHEET

		A	B	C	D	E	F	G	H	I	J	Power required	Empty weight	Loaded weight
	m <sup>3</sup>	mm	mm	mm	mm	mm	mm	mm	mm	mm	mm	kW-HP	kg	kg
<b>DS 50</b>	5	3.250	4.445	5.285	1.930	1.710	1.780	2.130	2.100	3.525	415	40-54	3.000*	5.000
<b>DS 70</b>	7	3.315	4.915	5.765	2.020	1.760	1.825	2.255	2.285	3.850	410	43-57	3.800*	7.000
<b>DS 90</b>	9	3.660	5.270	6.145	2.100	1.990	2.080	2.525	2.545	4.055	535	48-64	4.950*	8.800
<b>DS 120</b>	12	3.910	5.905	6.805	2.250	1.990	2.155	2.745	2.715	4.450	565	55-74	5.600*	10.500
<b>DS 160</b>	16	4.200	6.655	7.480	2.500	2.200	2.220	2.795	2.815	4.665	555	62-83	6.750*	12.500

\*Data are indicative and may change according to the configurations.

## Husky DS: 3-auger feed mixers with silage loader

The Husky DS range, with rear silage loader, is our 3-auger essential and compact feed mixer from 5 to 16 m<sup>3</sup> capacity.

The excellent central positioning of the axle enables a reduced wheel track improving the manoeuvrability in tight areas and a perfect distribution of the masses.

The front PVC unloading belt offers unmatched visibility to the operator and large 800 mm wide door for 5 and 7 m<sup>3</sup> and 900 mm for the bigger models. Husky DS is equipped with a rear silage loader with 1400 mm rotor width for 5-7 m<sup>3</sup> and 1650 mm for 9-12-16 m<sup>3</sup>, activated by a powerful and reliable independent hydraulic system. The electronic controls that activate the electro-hydraulic clutch simplify the use of the feed mixer by maintaining the operator in a safe environment.

Storti's standard weighing system is equipped with 3 cylindrical dynamic load cells which provide maximum stability and accuracy of weight. A sturdy and reliable transmission is provided by an epicycoid gearbox directly connected to the cutting-mixing auger with a dust reducing ring. The top augers are activated by an externally lubricated chain transmission.

# HUSKY DS

50

70

90

120

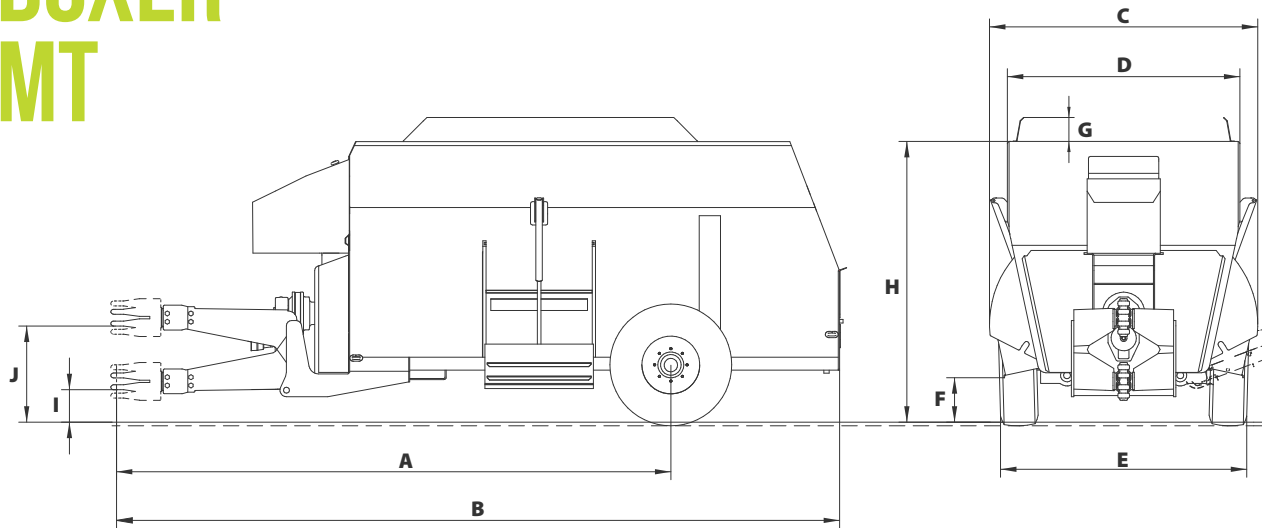
160

**STURTI**

E

F

# BOXER MT



## TECHNICAL DATA SHEET

		A	B	C	D	E	F	G	H	I	J	Power required	Empty weight	Loaded weight
	m <sup>3</sup>	mm	mm	mm	mm	mm	mm	mm	mm	mm	mm	kW-HP	kg	kg
<b>MT 70</b>	7	4.360	5.065	2.180	1.770	1.950	240	200	2.095	240	780	40-55	. *	.
<b>MT 90</b>	9	4.780	5.750	2.180	1.770	2.050	290	200	2.215	300	840	44-60	. *	.
<b>MT 120</b>	12	4.700	6.125	2.275	1.970	2.110	285	200	2.395	290	830	51-70	5.080*	10.000
<b>MT 150</b>	15	4.900	6.525	2.275	1.970	2.110	310	200	2.650	320	860	62-85	5.460*	11.000
<b>MT 180</b>	18	5.390	7.065	2.510	2.180	2.510	280	200	2.715	300	940	70-95	6.260*	13.000
<b>MT 210</b>	21	5.540	7.360	2.510	2.180	2.510	280	200	2.905	300	940	81-110	6.920*	14.000
<b>MT 240</b>	24	5.710	7.700	2.510	2.180	2.510	280	200	3.100	300	945	88-120	7.340*	15.000

\*Data are indicative and may change according to the configurations.

## Boxer MT: 2 counter-opposed augers with a quick fibre cut.

Boxer MT with 2 counter-opposed augers comprises a range of 7 models from 7 to 24 m<sup>3</sup>.

Two wide central doors allow to unload from both sides by using the standard chutes or optional PVC belts.

The MT models allow the operator to access the mixer from the rear by means of a safety grill or the optional wide hopper to check the TMR and to add components and concentrates to the mix.

Storti's standard weighing system is equipped with 3 cylindrical dynamic load cells which provide maximum stability and accuracy of weight.

A sturdy and reliable transmission is provided by an epicycloid gearbox and by two robust chains in oil bath for models 18-21-24 m<sup>3</sup>.

Quick access to the transmission makes the Boxer easy to maintain.

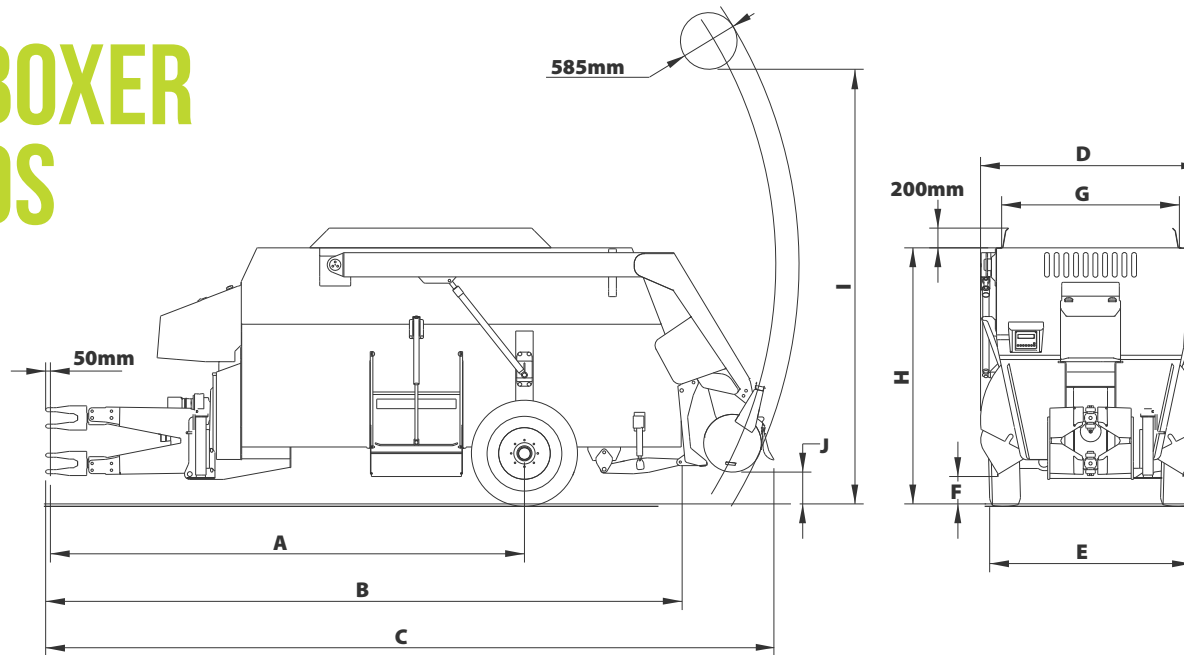
# BOXER MT

70  
90  
120  
150  
180  
210  
240



**STURTI**

# BOXER DS



## TECHNICAL DATA SHEET

		A	B	C	D	E	F	G	H	I	J	Power required	Empty weight	Loaded weight
	m <sup>3</sup>	mm	mm	mm	mm	mm	mm	mm	mm	mm	mm	kW-HP	kg	kg
<b>DS 70</b>	7	4.360	5.065	5.990	2.180	1.950	240	1.600	2.095	3.850	290	48-64	3.000*	7.000
<b>DS 90</b>	9	4.780	5.750	6.670	2.180	2.050	290	1.600	2.215	4.000	265	55-74	3.800*	8.800
<b>DS 120</b>	12	4.700	6.125	7.210	2.275	2.110	285	1.800	2.395	4.000	500	59-80	5.750*	10.000
<b>DS 150</b>	15	4.900	6.525	7.520	2.275	2.110	310	1.800	2.650	4.000	340	62-85	6.400*	11.000
<b>DS 180</b>	18	5.390	7.065	8.050	2.510	2.510	280	2.200	2.715	4.400	340	70-95	7.500*	13.000

\*Data are indicative and may change according to the configurations.

**Boxer DS:** 2 counter-opposed augers with rear silage loader. A robust and reliable mixer.

Boxer DS with 2 counter-opposed augers comprises a range of 5 models from 7 to 18 m<sup>3</sup>.

Two wide central doors allow to unload from both sides by using the standard chutes or optional PVC belts.

Boxer DS is equipped with a rear silage loader with 1650 mm wide rotor for 7-9 m<sup>3</sup> and 1800 mm wide for 12-15-18 m<sup>3</sup>, activated by a powerful and reliable independent hydraulic system.

The electronic controls that activate the electro-hydraulic clutch simplify the use of the feed mixer by maintaining the operator in a safe environment.

Storti's standard weighing system is equipped with 3 cylindrical dynamic load cells which provide maximum stability and accuracy of weight.

A sturdy and reliable transmission is provided by an epicycoid gearbox and by two robust chains in oil bath for models 18-21-24 m<sup>3</sup>.

585mm

200mm

# BOXER DS

70

90

120

150

180

E

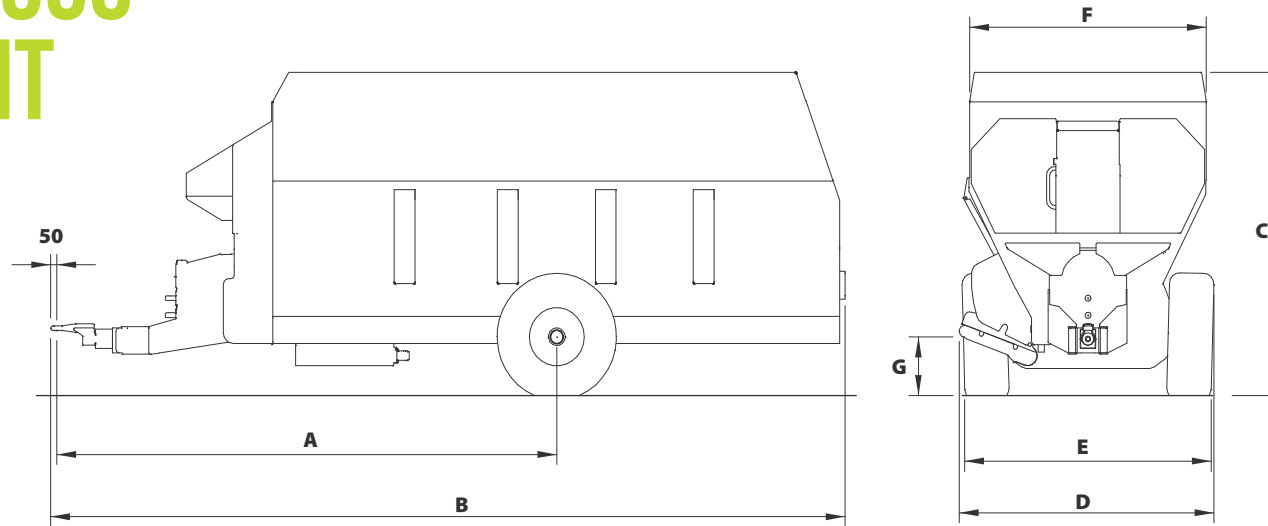
**STURTI**

B

C



# DOGO MT



## TECHNICAL DATA SHEET

		A	B	C	D	E	F	G	H	I	J	Power required	Empty weight	Loaded weight
	m <sup>3</sup>	mm	mm	mm	mm	mm	mm	mm	mm	mm	mm	kW-HP	kg	kg
<b>MT 220</b>	22	4.660	7.220	2.960	2.460	2.420	2.390	540				74-100	8.160*	15.500
<b>MT 250</b>	25	4.820	7.720	2.960	2.460	2.420	2.390	540				88-120	8.900*	17.000
<b>MT 280</b>	28	5.050	7.920	3.160	2.460	2.420	2.390	540				103-140	10.000*	19.500

\*Data are indicative and may change according to the configurations.

## Dogo MT: 3-auger mixer for larger farms

Dogo, available in 22-25-28 m<sup>3</sup>, is the evolution of the Husky range. It features the same 3-auger multi-flow mixing system with the following advantages:

- Bigger capacity for larger farms
- Reinforced transmission designed for higher loads
- 1100 mm diameter main auger which improves homogeneity and mixing flow, while reducing power demand from the tractor
- Top counter-rotating augers with knives
- Weighing system with 5 load cells for heavy loads
- 12 mm standard tank bottom thickness

Also in the Dogo range, the excellent central position of the axle enables a reduced wheel track improving the manoeuvrability in tight areas and a perfect distribution of the masses.

The 900 mm wide front door with PVC belt enables an unmatched visibility to the operator.

The rear safety grill allows the operator to check the TMR and add components and concentrates.

# DOGO MT

220

250

280



B

E

D **STURTI**

# STATIONARY

A complete electric driven range.

It is always possible to transform our MT horizontal feed mixers into stationary mixers.

Starting from any standard model, a conversion kit enables to obtain a stationary mixer.

The conversion kit consists of a floor stand, an electric control panel with

soft-start or inverter technology, an electric motor and a PTO shaft. Environment sustainability has always driven new solutions. Our electric range is aimed at farms which intend to use self-produced electricity (biogas plants, photovoltaic or other sources)



IN LOVE  
WITH FEEDING

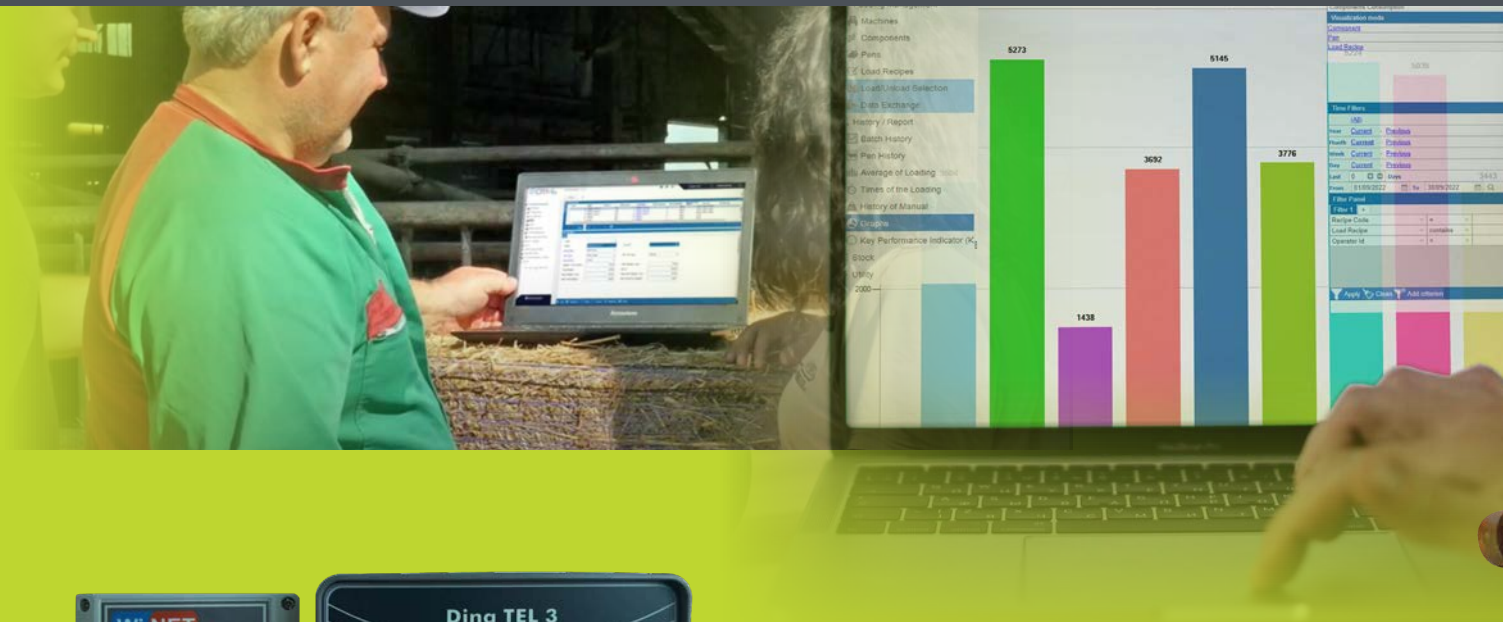
# WEIGHING SYSTEMS AND ACCESSORIES

Data management for an accurate monitoring of feeding costs.

All feed mixer wagons are equipped with a complete weighing system.

Weigh boxes may be operated manually or through recipes residing in the internal programmable storage.

Feeding data can be managed via a cloud software that allows to transfer the recipes to the weigh box, upload feeding data to create reports in multiple formats.

**STRTI**

# EXTRA *ordinary* STORTI

BEYOND THE PRODUCTS



**STORTI S.P.A.**

Via Castelletto 10  
37050 Belfiore VR | ITALY  
Phone +39 045 6134311  
Fax +39 045 614 9006  
info@storti.com

**STORTI FRANCE**

Za Chateau Gillard Route de Polign  
35470 Bain de Bretagne | FRANCE  
Phone +33 02 99 44 25 03  
Fax +33 2 99 44 25 15  
servicestortifrance@storti.com

**STORTI DEUTSCHLAND**

Phone. +49 170 302 9507  
Fax +49 89 982 479 029  
stortide@storti.com



DEALER DECAL OR DATA



**WWW.STORTI.COM**



THE CONTENT OF THIS DOCUMENT IS PURELY INDICATIVE. PLEASE DOUBLE CHECK AVAILABILITY OF A SPECIFIC MODEL IN YOUR AREA.  
STORTI S.P.A. IS NOT LEGALLY LIABLE FOR ANY DISCREPANCY IN CONFIGURATION.

FEED MIXER WAGONS

# HORIZONTAL TRAILED MIXERS

PRODUCTS RANGE

**STURTI**  
Excellence since 1956





# IN LOVE WITH FEEDING

**Since 1956** we have been producing machines  
and SOLUTIONS for ANIMAL FEED AND HEALTH



We envisage a world where economic and environmental sustainability, traceability and animal health may be the leading values to win future feeding challenges.

We have been satisfying our customers' needs with new high end and innovative products and services for more than 65 years.

Innovation, passion, as well as our great team spirit have driven us to become one of the world's leading references in agricultural mechanization.



# STORTI PRODUCT RANGE

## SELF-PROPELLED



### VERTICAL

dobermann<sup>EVO</sup>  
SV

dobermann<sup>EVO</sup>  
SW

dobermann<sup>EVO</sup>  
SW GP

terrier<sup>EVO</sup>  
SW

## TRAILED



### HORIZONTAL

husky  
MT

husky  
DS

boxer  
MT

boxer  
DS

## STATIONARY



### HORIZONTAL

husky  
ST

## STATIONARY



### VERTICAL

dunker  
ST

terrier\*  
SW

## SELF-PROPELLED



pointerEVO

pointer\*

greyhound\*

## HORIZONTAL

\* AVAILABLE ONLY IN SPECIFIC MARKETS

dogo  
MT

## TRAILED

dunker  
T1dunker  
T2dunker  
T3

## VERTICAL

SERVING  
THE BARN

sweeper



SB30



motobrush

# STORTI HORIZONTAL MIXER WAGONS

TRAILED AND STATIONARY MIXERS



IN LOVE  
WITH<sup>®</sup> FEEDING

# PLUS

*Discover our advantages*

LOADING <

MIXING AND TMR <

OPTIONS <

UNLOADING <

COMPACT FEEDING <



**STURTI**



## LOADING

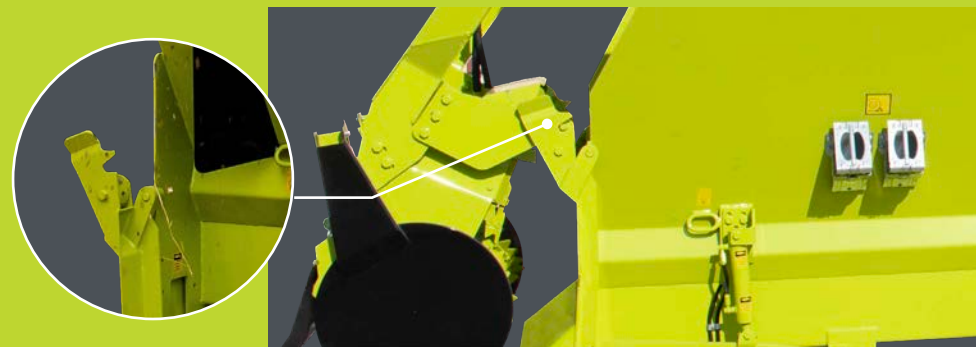
The rear silage loader, available for all DS horizontal mixers in 3 widths (1400, 1650, 1800 mm), preserves the perfect feed fibre and structure in all types of bunkers: corn silage, grass silage, hay, straw and other types of feed.

The rear silage loader is activated by a powerful hydraulic motor that, thanks to its rotor design, does not mishandle silage structure and feed, while maintaining high loading performances and accurate quantities. Specific options are available for intensive use of the silage loader by

Multiple solutions for a fast precise and performing mix.

selecting a cast iron body pump and a dedicated cooling system.

Storti is careful to comply with the most stringent safety rules. Therefore, we have equipped our silage loaders with an electro-hydraulic clutch which, operated by or Dinacom 2 electric control, stops the mixing and loading process as soon as the operator moves to an unsafe position.



IN LOVE  
WITH FEEDING®

The silage loader is safely attached to the mixer wagon during transport thanks to a specific hooking mechanism which avoids

any stress or damage when travelling on uneven terrains.



Our MT horizontal mixers can easily be filled by using a common telescopic loader or tractor loader arms either from the side or from the rear by means of a dedicated hopper.

**STURTI**

## MIXING AND TMR

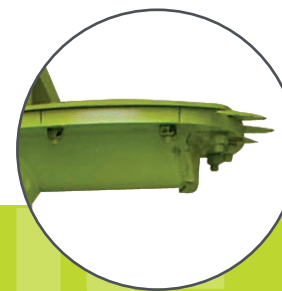
Storti horizontal mixers: multiple technologies to reach the best solutions.

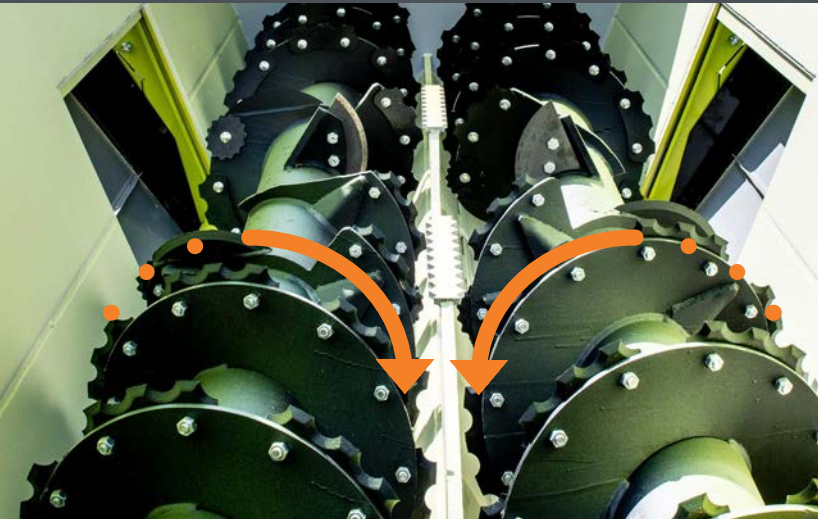
Horizontal mixing system main advantages:

- A quick and precise fibre cut thanks to the reduced distance between knives and breaker bars which improves animal rumination.
- Possibility of preparing specific rations for smaller groups of animals by maintaining the same mixing quality.
- Superior mixing quality as our multi-flow system is less affected by the specific weight of each component.
- 90% dust reduction coming from the mixing process also when processing dry feeds.
- Adjustable cutting performances by modifying the distance between knives and breaker bars.

Only genuine spare parts guarantee a lasting trim and mixing performance.

IN LOVE  
WITH FEEDING®

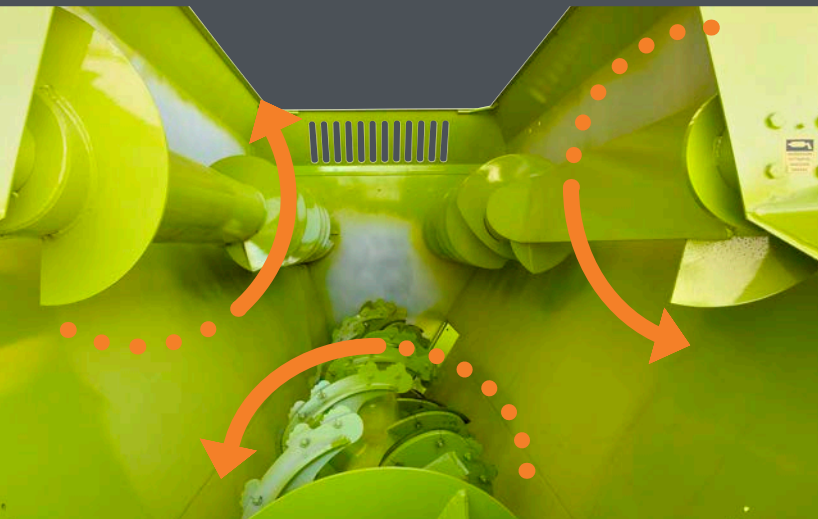




### **Boxer: 2 counter-opposed mixing augers.**

Our 2-auger counter-opposed “volcanic” mixing technology enables long fibre quick cut also when processing complete bales, resulting in an extremely soft final mix. As a matter of fact, the complete distribution of knives along the augers provides excellent cutting performances which have become a benchmark in our industry.

Power requirements remain low even when processing long fibres and heavy loads.



### **Husky: Multi-flow 3-auger mixing technology.**

Our extended experience worldwide using different types of feed helped us optimize our Multi-flow mixing technology. The bottom paddle auger with multiple angles of attack provides maximum TMR homogeneity and an efficient fibre cut to improve ingestion and rumination.

Our 3-auger technology maximizes the efficient use of the mixer volume. The main mixing auger moves the feed from rear to front where the top augers move the ingredients back towards the rear where the flow starts again.

## OPTIONS

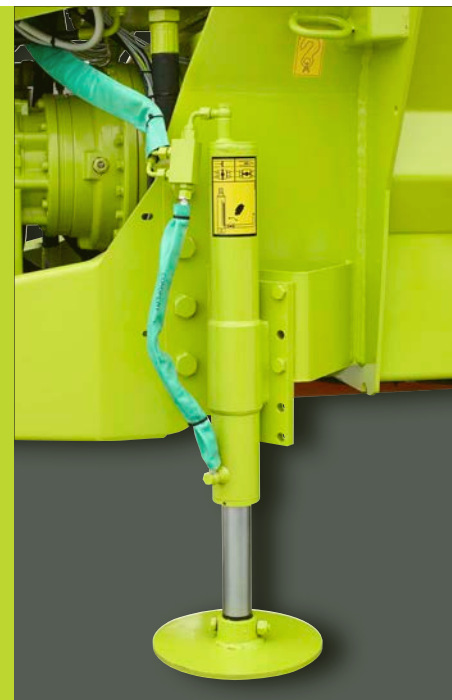
The correct solution  
for all needs.

To comply with customers' growing needs, our list of options has increased in range and depth.

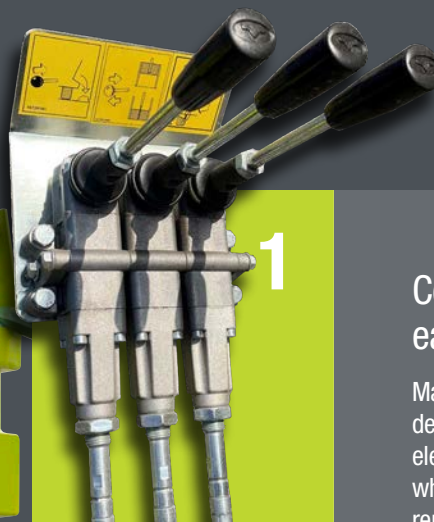
Improving has always been Storti's DNA and our technical solutions have enhanced the TMR mixing experience.

Some of the most requested and appreciated options are:

- Stainless steel bottom to increase the working life of the mixer
- Lower wheels to reduce the overall mixer height
- Multiple lengths unloading belts
- Braking systems and roadworthy certifications
- Weighing systems and precision feeding software
- Larger wheels for a lower ground pressure when working on muddy terrains
- Silage loaders with aggressive knives patterns when working with highly compacted feed



IN LOVE  
WITH FEEDING



1

## Comfortable access and easy maintenance.

Maintenance is made easy by a correct design of the access to all mechanical, electric and hydraulic components, which are centralized and protected by removable bonnets



2

Mixing augers greasing and adjusting is simple and accessible.

## Controls and functions.

1. Flexible cable controls are standard for our MT models, while option for DS models in non-EU countries.

2. Dinacom 2 electronic controls are standard for DS models and an integral component of our silage loading safety system, while option on all MT models.



3

3. The DTO control is an option for MT and DS models (only in non-EU countries).



## UNLOADING

Maximum tank cleanliness  
with even unload.

When you are looking for a precise, even unloading and a complete tank cleanliness, horizontal feed mixers are the best solution.

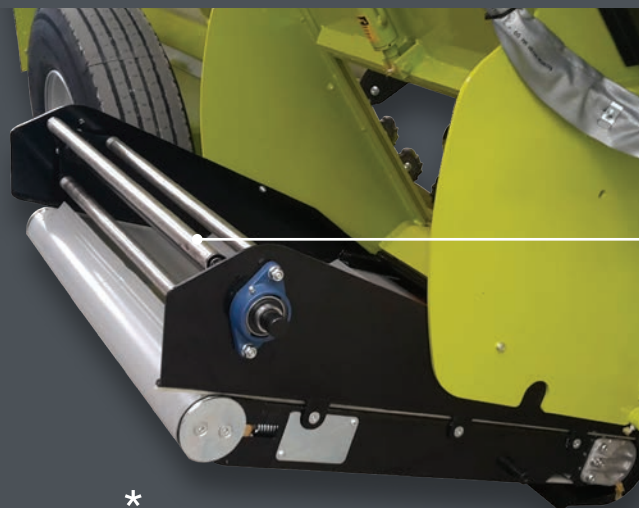
Horizontal feed mixing is appreciated when you need an accurate unloading and in particular for smaller groups of animals (i.e. beef cattle boxes) as the

feed flow is easily controlled by the operator.

PVC unloading belts enable a scalable feed distribution, while maintaining a very low noise level also at high speed. It is possible to unload feed at a distance with a mechanism that is safe for the animals as well as for the operator.



Wide unloading doors

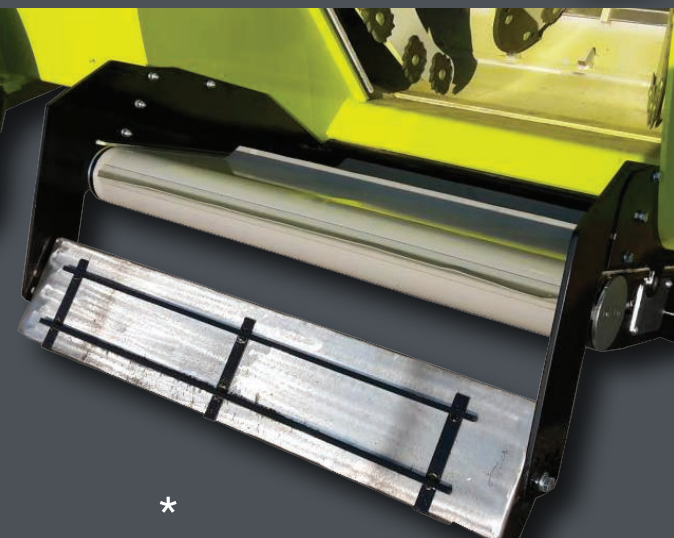


The rotation magnet is available for our complete range of mixers. Coupled to PVC unloading belts, it enables an efficient search and removal of metal scraps in your TMR, such as nuts, bolts and steel wire.

The rotation movement of the magnetic paddle improves TMR fluffiness and palatability.



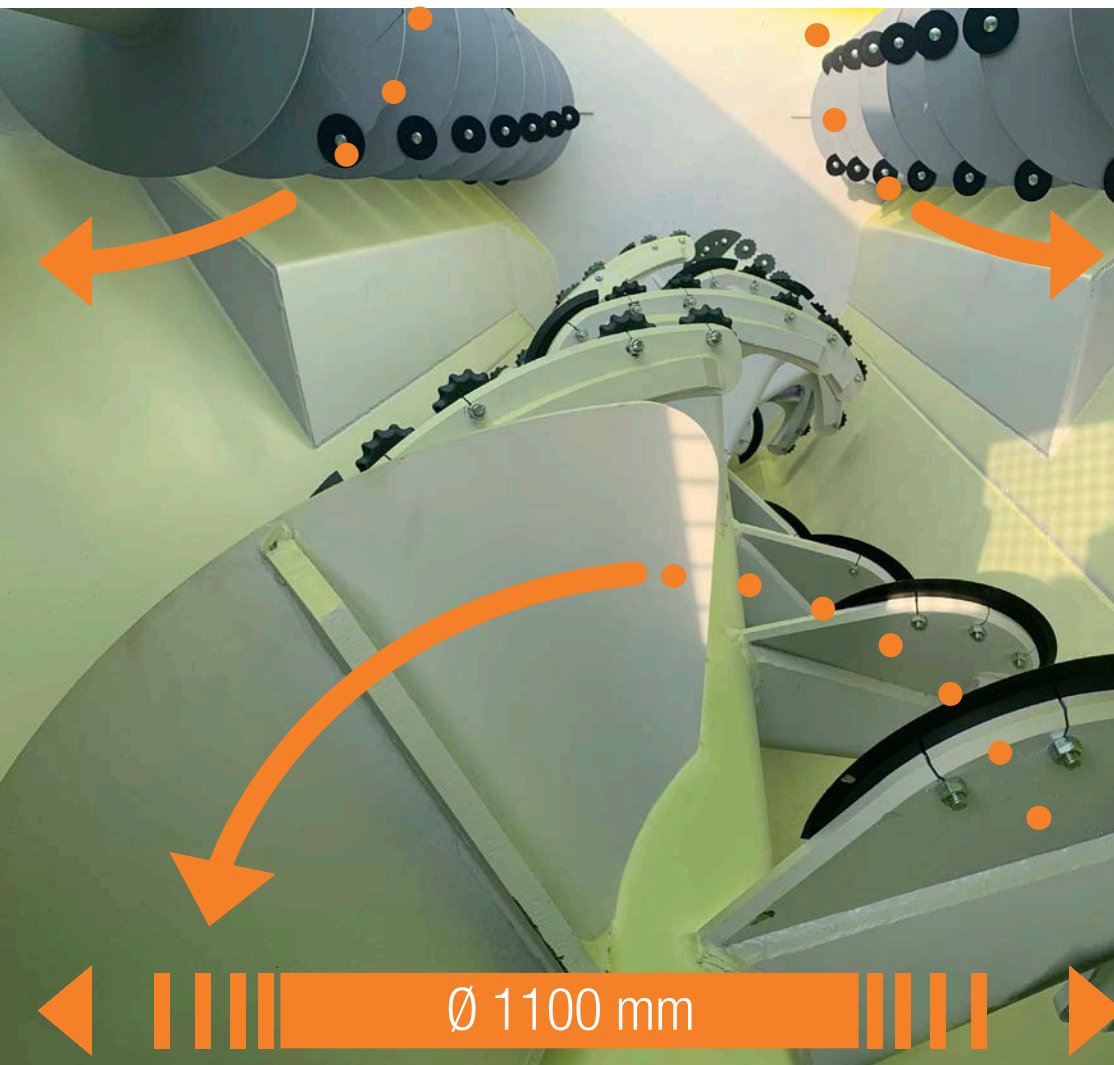
Our fix magnets are a simple and economical solution that maintain the unloading flow and act as a magnetic chute where metal scraps are trapped.



Having metal scrap in your TMR?  
Our magnets will do the job.

\* To obtain better photographic material for this catalogue, some of the safety protections have been temporarily removed. We remind you that for your safety, such protections must not be removed or tampered with.

**STURTI**



## COMPACT FEEDING

A new trend which is already a must in various countries.

Compact Feeding is a relatively new concept. It was developed in Denmark around 10 years ago. It consists in adding water to concentrates and let this pre-mix mature for hours or

even for the whole night. Silage feed is then added to obtain an extremely compact and heavy mix, so animals are compelled to eat the complete TMR avoiding any selection. This guarantees that the entire herd will be fed with the same TMR ration.

Comparative and independent tests in Denmark have proved that the most suitable type of mixing technology for this type of mixes is the 3-auger horizontal system, as it provides homogeneity and tank cleanness when unloading. Our DOGO 3-auger range of horizontal mixer has been developed with Compact Feeding in mind.



IN LOVE  
WITH FEEDING

Upper counter-rotating augers with knives, 1100 mm diameter main cutting-mixing bottom auger with Piranha adjustable knives.

**Dogo:** the horizontal range  
for larger farms.

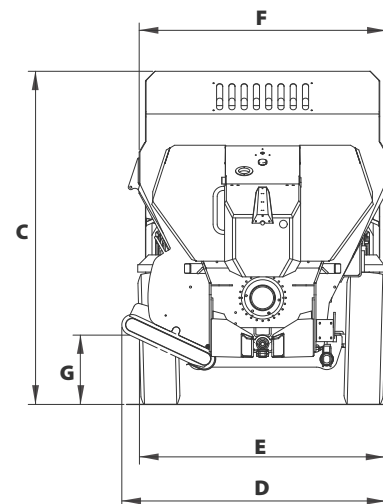
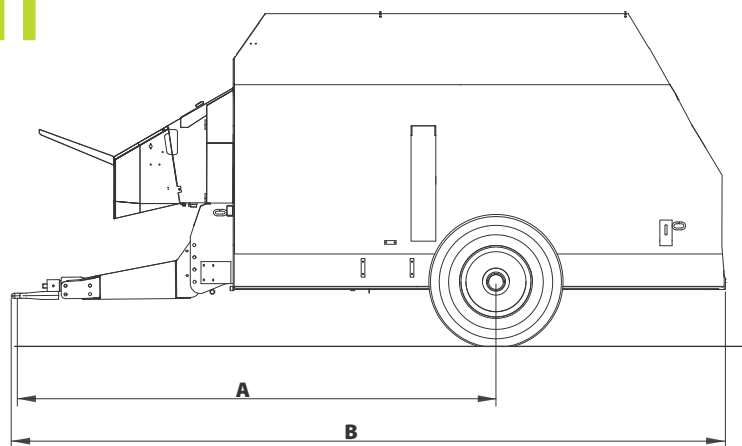
The DOGO range has been also developed to satisfy the demand of high-capacity horizontal mixers for intensive and continuous applications.

Dogo is aimed at larger farms that appreciate the quality of horizontal mixing technology while using high loading capacities.



**STURTI**

# HUSKY MT



## TECHNICAL DATA SHEET

		A	B	C	D	E	F	G	H	I	J	Power required	Empty weight	Loaded weight
	m <sup>3</sup>	mm	mm	mm	mm	mm	mm	mm	mm	mm	mm	kW-HP	kg	kg
<b>MT 50</b>	5	3.250	4.445	2.100	1.780	1.710	1.665	415				34-45	2.550*	4.700
<b>MT 70</b>	7	3.315	4.915	2.285	1.825	1.760	1.750	410				35-47	3.050*	6.700
<b>MT 90</b>	9	3.660	5.270	2.545	2.080	1.990	1.865	535				40-54	3.950*	8.350
<b>MT 120</b>	12	3.910	5.905	2.715	2.155	1.990	2.015	565				46-61	4.600*	9.900
<b>MT 160</b>	16	4.200	6.655	2.815	2.220	2.200	2.140	555				53-71	5.700*	11.900
<b>MT 190</b>	19	4.350	6.900	2.950	2.270	2.275	2.265	580				57-76	6.150*	13.000

\*Data are indicative and may change according to the configurations.

## Husky MT: Just mixing

The Husky MT range is our 3-auger essential and compact feed mixer from 5 to 19 m<sup>3</sup> capacity.

The excellent central positioning of the axle enables a reduced wheel track improving the manoeuvrability in tight areas and a perfect distribution of the masses. The front PVC unloading belt offers unmatched visibility to the operator and large 800 mm wide door for 5 and 7 m<sup>3</sup> and 900 mm for the bigger models.

The MT models allow the operator to access the mixer by means of a rear safety grill to check TMR quality and add concentrates and flours.

Storti's standard weighing system is equipped with 3 cylindrical dynamic load cells which provide maximum stability and accuracy of weight.

A sturdy and reliable transmission is provided by an epicycoid gearbox directly connected to the cutting-mixing auger with a dust reducing ring. The top augers are activated by an externally lubricated chain transmission.

# HUSKY MT

50  
70  
90  
120  
160  
190

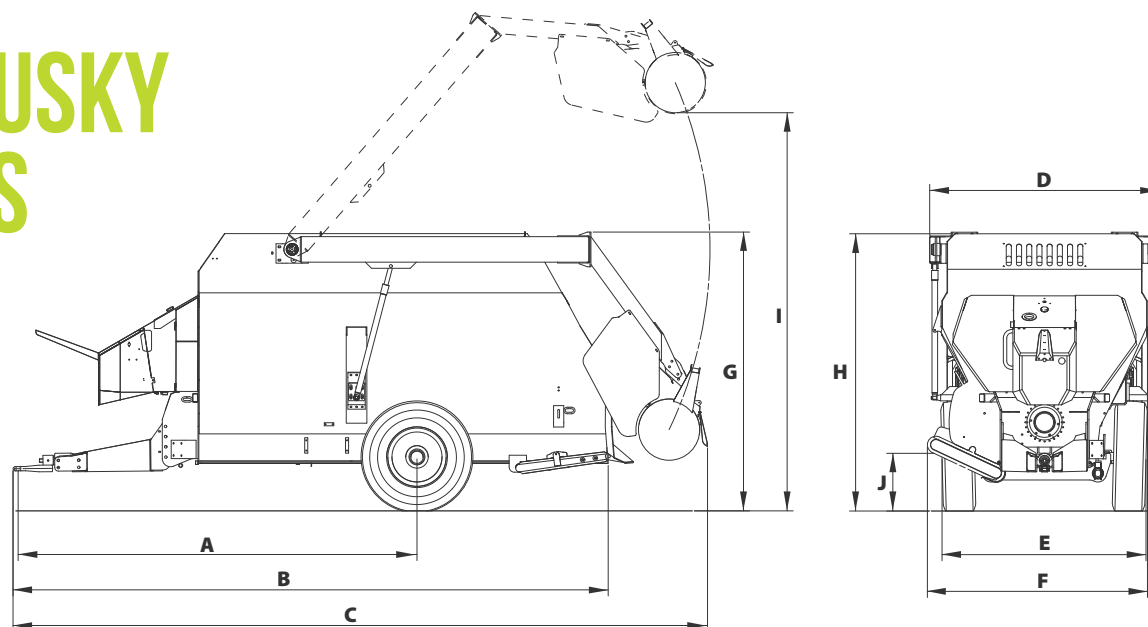


B

STORTI E

D

# HUSKY DS



## TECHNICAL DATA SHEET

		A	B	C	D	E	F	G	H	I	J	Power required	Empty weight	Loaded weight
	m <sup>3</sup>	mm	mm	mm	mm	mm	mm	mm	mm	mm	mm	kW-HP	kg	kg
<b>DS 50</b>	5	3.250	4.445	5.285	1.930	1.710	1.780	2.130	2.100	3.525	415	40-54	3.000*	5.000
<b>DS 70</b>	7	3.315	4.915	5.765	2.020	1.760	1.825	2.255	2.285	3.850	410	43-57	3.800*	7.000
<b>DS 90</b>	9	3.660	5.270	6.145	2.100	1.990	2.080	2.525	2.545	4.055	535	48-64	4.950*	8.800
<b>DS 120</b>	12	3.910	5.905	6.805	2.250	1.990	2.155	2.745	2.715	4.450	565	55-74	5.600*	10.500
<b>DS 160</b>	16	4.200	6.655	7.480	2.500	2.200	2.220	2.795	2.815	4.665	555	62-83	6.750*	12.500

\*Data are indicative and may change according to the configurations.

## Husky DS: 3-auger feed mixers with silage loader

The Husky DS range, with rear silage loader, is our 3-auger essential and compact feed mixer from 5 to 16 m<sup>3</sup> capacity.

The excellent central positioning of the axle enables a reduced wheel track improving the manoeuvrability in tight areas and a perfect distribution of the masses.

The front PVC unloading belt offers unmatched visibility to the operator and large 800 mm wide door for 5 and 7 m<sup>3</sup> and 900 mm for the bigger models. Husky DS is equipped with a rear silage loader with 1400 mm rotor width for 5-7 m<sup>3</sup> and 1650 mm for 9-12-16 m<sup>3</sup>, activated by a powerful and reliable independent hydraulic system. The electronic controls that activate the electro-hydraulic clutch simplify the use of the feed mixer by maintaining the operator in a safe environment.

Storti's standard weighing system is equipped with 3 cylindrical dynamic load cells which provide maximum stability and accuracy of weight. A sturdy and reliable transmission is provided by an epicycoid gearbox directly connected to the cutting-mixing auger with a dust reducing ring. The top augers are activated by an externally lubricated chain transmission.

# HUSKY DS

50

70

90

120

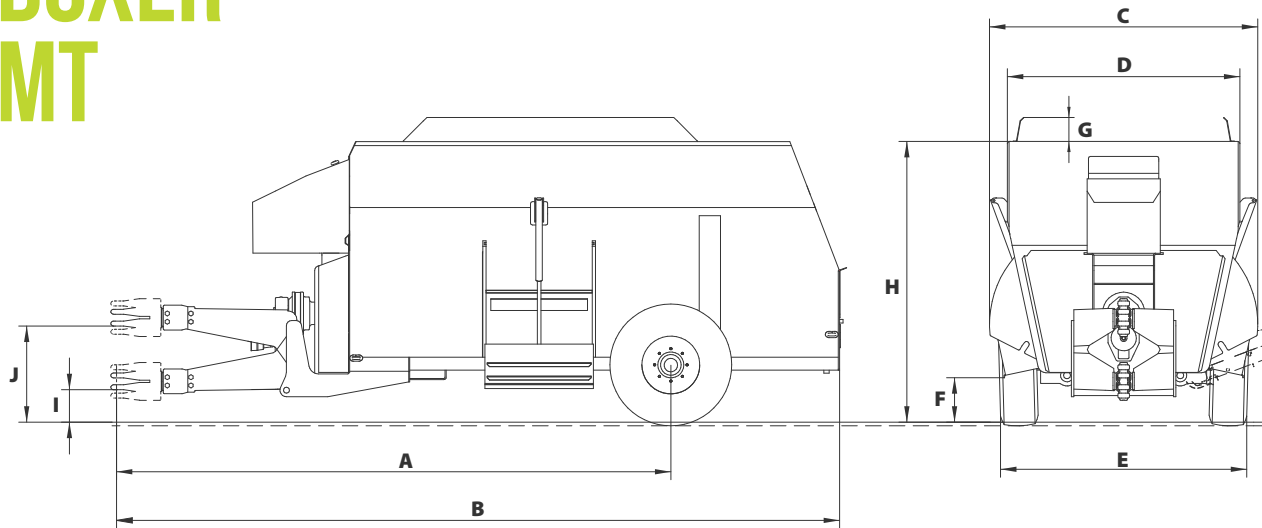
160

**STURTI**

E

F

# BOXER MT



## TECHNICAL DATA SHEET

		A	B	C	D	E	F	G	H	I	J	Power required	Empty weight	Loaded weight
	m <sup>3</sup>	mm	mm	mm	mm	mm	mm	mm	mm	mm	mm	kW-HP	kg	kg
<b>MT 70</b>	7	4.360	5.065	2.180	1.770	1.950	240	200	2.095	240	780	40-55	. *	.
<b>MT 90</b>	9	4.780	5.750	2.180	1.770	2.050	290	200	2.215	300	840	44-60	. *	.
<b>MT 120</b>	12	4.700	6.125	2.275	1.970	2.110	285	200	2.395	290	830	51-70	5.080*	10.000
<b>MT 150</b>	15	4.900	6.525	2.275	1.970	2.110	310	200	2.650	320	860	62-85	5.460*	11.000
<b>MT 180</b>	18	5.390	7.065	2.510	2.180	2.510	280	200	2.715	300	940	70-95	6.260*	13.000
<b>MT 210</b>	21	5.540	7.360	2.510	2.180	2.510	280	200	2.905	300	940	81-110	6.920*	14.000
<b>MT 240</b>	24	5.710	7.700	2.510	2.180	2.510	280	200	3.100	300	945	88-120	7.340*	15.000

\*Data are indicative and may change according to the configurations.

## Boxer MT: 2 counter-opposed augers with a quick fibre cut.

Boxer MT with 2 counter-opposed augers comprises a range of 7 models from 7 to 24 m<sup>3</sup>.

Two wide central doors allow to unload from both sides by using the standard chutes or optional PVC belts.

The MT models allow the operator to access the mixer from the rear by means of a safety grill or the optional wide hopper to check the TMR and to add components and concentrates to the mix.

Storti's standard weighing system is equipped with 3 cylindrical dynamic load cells which provide maximum stability and accuracy of weight.

A sturdy and reliable transmission is provided by an epicycloid gearbox and by two robust chains in oil bath for models 18-21-24 m<sup>3</sup>.

Quick access to the transmission makes the Boxer easy to maintain.

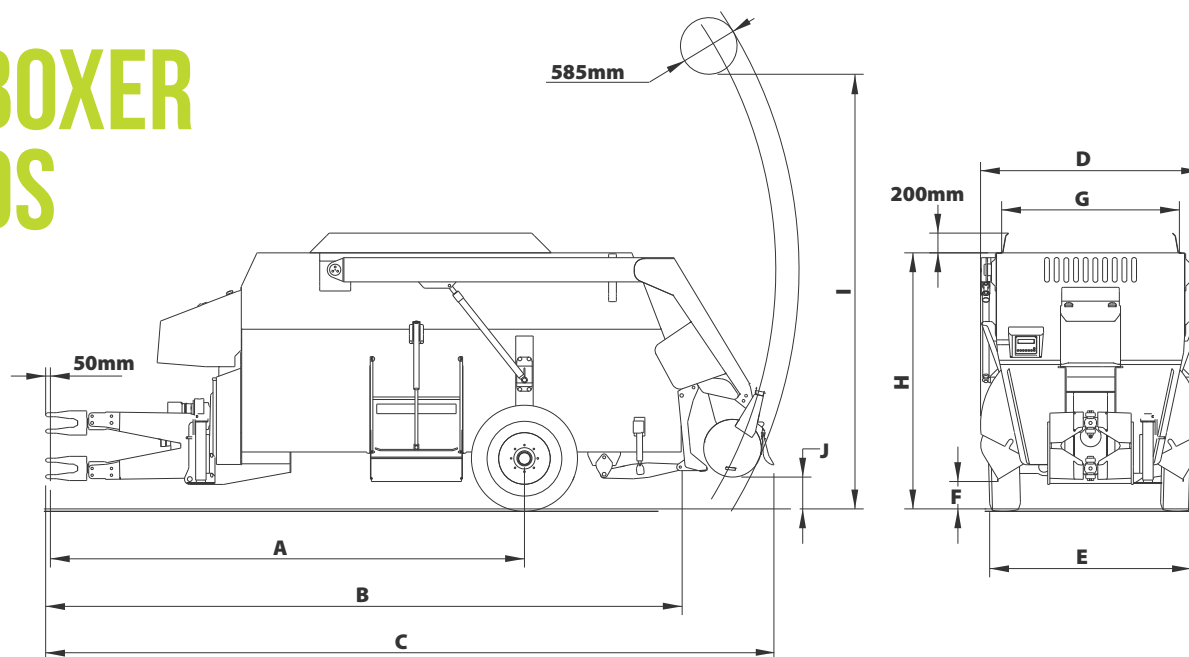
# BOXER MT

70  
90  
120  
150  
180  
210  
240



**STURTI**

# BOXER DS



## TECHNICAL DATA SHEET

		A	B	C	D	E	F	G	H	I	J	Power required	Empty weight	Loaded weight
	m <sup>3</sup>	mm	mm	mm	mm	mm	mm	mm	mm	mm	mm	kW-HP	kg	kg
<b>DS 70</b>	7	4.360	5.065	5.990	2.180	1.950	240	1.600	2.095	3.850	290	48-64	3.000*	7.000
<b>DS 90</b>	9	4.780	5.750	6.670	2.180	2.050	290	1.600	2.215	4.000	265	55-74	3.800*	8.800
<b>DS 120</b>	12	4.700	6.125	7.210	2.275	2.110	285	1.800	2.395	4.000	500	59-80	5.750*	10.000
<b>DS 150</b>	15	4.900	6.525	7.520	2.275	2.110	310	1.800	2.650	4.000	340	62-85	6.400*	11.000
<b>DS 180</b>	18	5.390	7.065	8.050	2.510	2.510	280	2.200	2.715	4.400	340	70-95	7.500*	13.000

\*Data are indicative and may change according to the configurations.

**Boxer DS:** 2 counter-opposed augers with rear silage loader. A robust and reliable mixer.

Boxer DS with 2 counter-opposed augers comprises a range of 5 models from 7 to 18 m<sup>3</sup>.

Two wide central doors allow to unload from both sides by using the standard chutes or optional PVC belts.

Boxer DS is equipped with a rear silage loader with 1650 mm wide rotor for 7-9 m<sup>3</sup> and 1800 mm wide for 12-15-18 m<sup>3</sup>, activated by a powerful and reliable independent hydraulic system.

The electronic controls that activate the electro-hydraulic clutch simplify the use of the feed mixer by maintaining the operator in a safe environment.

Storti's standard weighing system is equipped with 3 cylindrical dynamic load cells which provide maximum stability and accuracy of weight.

A sturdy and reliable transmission is provided by an epicycloid gearbox and by two robust chains in oil bath for models 18-21-24 m<sup>3</sup>.

585mm

200mm

# BOXER DS

70

90

120

150

180

E

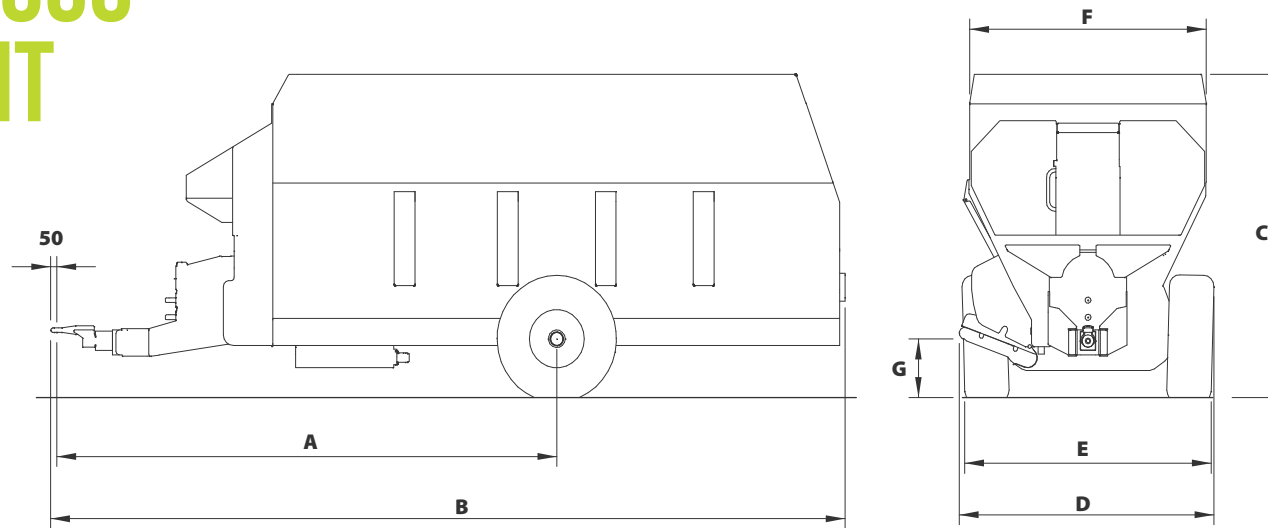
**STURTI**

B

C



# DOGO MT



## TECHNICAL DATA SHEET

		A	B	C	D	E	F	G	H	I	J	Power required	Empty weight	Loaded weight
	m <sup>3</sup>	mm	mm	mm	mm	mm	mm	mm	mm	mm	mm	kW-HP	kg	kg
<b>MT 220</b>	22	4.660	7.220	2.960	2.460	2.420	2.390	540				74-100	8.160*	15.500
<b>MT 250</b>	25	4.820	7.720	2.960	2.460	2.420	2.390	540				88-120	8.900*	17.000
<b>MT 280</b>	28	5.050	7.920	3.160	2.460	2.420	2.390	540				103-140	10.000*	19.500

\*Data are indicative and may change according to the configurations.

## Dogo MT: 3-auger mixer for larger farms

Dogo, available in 22-25-28 m<sup>3</sup>, is the evolution of the Husky range. It features the same 3-auger multi-flow mixing system with the following advantages:

- Bigger capacity for larger farms
- Reinforced transmission designed for higher loads
- 1100 mm diameter main auger which improves homogeneity and mixing flow, while reducing power demand from the tractor
- Top counter-rotating augers with knives
- Weighing system with 5 load cells for heavy loads
- 12 mm standard tank bottom thickness

Also in the Dogo range, the excellent central position of the axle enables a reduced wheel track improving the manoeuvrability in tight areas and a perfect distribution of the masses.

The 900 mm wide front door with PVC belt enables an unmatched visibility to the operator.

The rear safety grill allows the operator to check the TMR and add components and concentrates.

# DOGO MT

220

250

280



B

E

D **STURTI**

# STATIONARY

A complete electric driven range.

It is always possible to transform our MT horizontal feed mixers into stationary mixers.

Starting from any standard model, a conversion kit enables to obtain a stationary mixer.

The conversion kit consists of a floor stand, an electric control panel with

soft-start or inverter technology, an electric motor and a PTO shaft. Environment sustainability has always driven new solutions. Our electric range is aimed at farms which intend to use self-produced electricity (biogas plants, photovoltaic or other sources)



IN LOVE  
WITH FEEDING

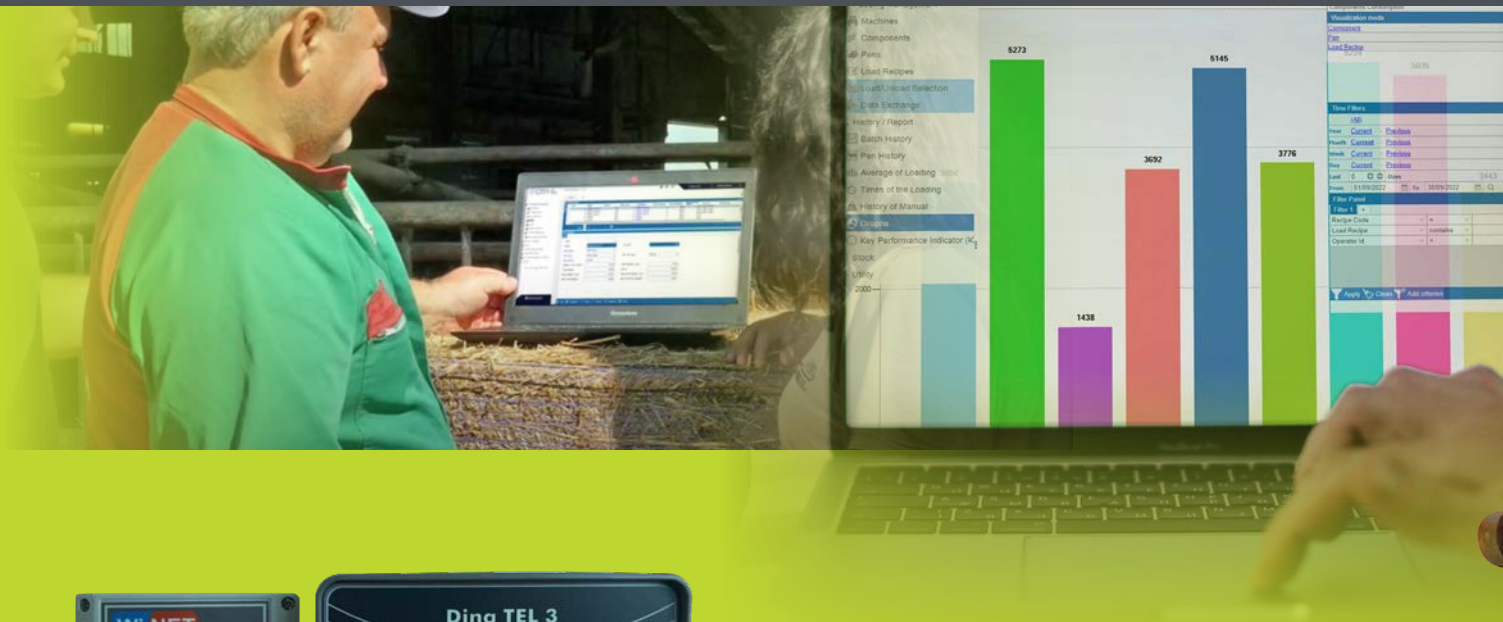
# WEIGHING SYSTEMS AND ACCESSORIES

Data management for an accurate monitoring of feeding costs.

All feed mixer wagons are equipped with a complete weighing system.

Weigh boxes may be operated manually or through recipes residing in the internal programmable storage.

Feeding data can be managed via a cloud software that allows to transfer the recipes to the weigh box, upload feeding data to create reports in multiple formats.

**STRTI**

# EXTRA *ordinary* STORTI

BEYOND THE PRODUCTS



**STORTI S.P.A.**

Via Castelletto 10  
37050 Belfiore VR | ITALY  
Phone +39 045 6134311  
Fax +39 045 614 9006  
info@storti.com

**STORTI FRANCE**

Za Chateau Gillard Route de Polign  
35470 Bain de Bretagne | FRANCE  
Phone +33 02 99 44 25 03  
Fax +33 2 99 44 25 15  
servicestortifrance@storti.com

**STORTI DEUTSCHLAND**

Phone. +49 170 302 9507  
Fax +49 89 982 479 029  
stortide@storti.com



DEALER DECAL OR DATA



**WWW.STORTI.COM**



THE CONTENT OF THIS DOCUMENT IS PURELY INDICATIVE. PLEASE DOUBLE CHECK AVAILABILITY OF A SPECIFIC MODEL IN YOUR AREA.  
STORTI S.P.A. IS NOT LEGALLY LIABLE FOR ANY DISCREPANCY IN CONFIGURATION.