



Lowlander Mk4 – 150C



Full width floor slats – MK4



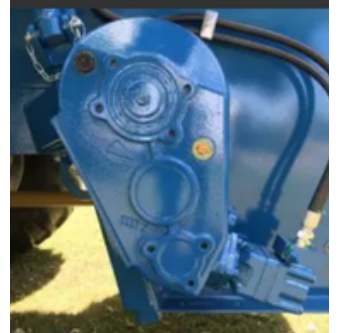
Twin dynamically balanced vertical augers – MK4



One piece gearbox – Mk4



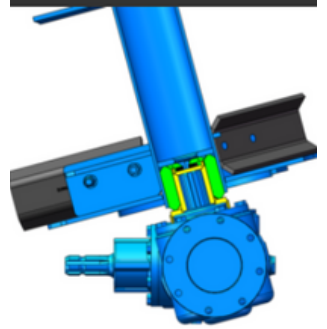
Floor drive gearbox RT800 TVA



Floor chains – 16mm



Rubber cushion drive coupling



Lowlander Mk4 – 150C

- Carrying capacity: 16.6 tonnes
- Cubic meters heaped: 16m³
- Body width 1500mm
- Heavy duty fully welded construction
- Handles all manure types and other materials
- Dynamically balanced twin vertical augers
- 10mm thick auger flights from heat treated BORON steel
- Augers protected by rubber cushioned drive
- Auger gearbox protection via shearbolt
- Reversible BORON cutters with re-inforcing plate
- One piece auger gearbox arrangement
- Robust, purpose built agricultural axle for application
- Long lasting composite floor shaft bearings



Lowlander Widebody 180



Lowlander Widebody 180

- Carrying capacity: 18 tonnes
- Cubic meters heaped: 21 to 26m³
- Body width 1830mm
- Heavy duty fully welded construction
- Handles all manure types and other materials
- Widebody 865mm dynamically balanced twin vertical augers
- 10mm thick auger flights from heat treated BORON steel
- Augers protected by rubber cushioned drive
- Auger gearbox protection via shearbolt
- Reversible BORON cutters with re-inforcing plate
- One piece auger gearbox arrangement
- Robust, purpose built agricultural axle for application
- Long lasting composite floor shaft bearings
- Floor protected by cross line relief valve

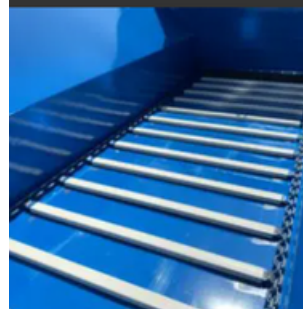
305mm Bolt on Flared Extensions



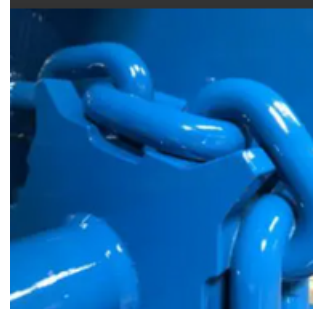
Twin dynamically balanced vertical augers - Widebody



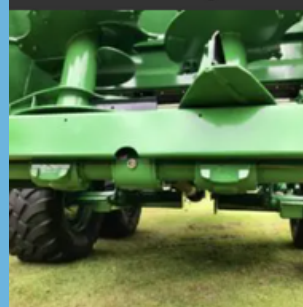
Full width floor slats - Widebody



Floor chains - 20mm



One Piece Gearbox - Widebody



Rubber cushion drive coupling

